

Surface-mounted luminaire - Micro-prismatic diffuser - direct distribution

Enclosure made of sheet steel in aluminium frame, powder coated white. Housing colour traffic white RAL 9016; Light distribution direct distribution by means of Micro-prismatic diffuser of PMMA, non-yellowing pane and single lenses. Suitable for VDU workstations, 65° < 3000 cd/m² omnidirectional glare reduction in accordance with current DIN-EN 12464-1 standard. Including multi-lumen driver with 8 adjustable light outputs; flicker < 5%;. Electrical connection via 3-pole connection terminal with plug-in contacts. With a colour temperature switch (CCT2) for switching the light colour 830/840, light colour 840 preset. Ceiling traverse is included in delivery. Further information on the driver switching stages can be found on the Internet on the product detail page or in the product data sheet under Operating data.

CHARACTERISTICS

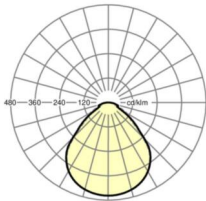
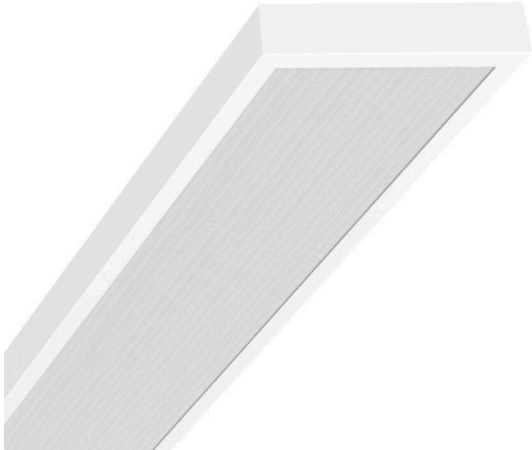
Order number	60898034150
EAN number	4020863509140
Commodity code	94051190
Certification mark	IP 40, Protection class II, γ 65°<3000 cd/m², F, Indoor, CE
Impact resistance (IK rating)	IK05 (-10°C to 35°C)
Ambient temperatur	ta -10°C to 35°C
Warranty period	5 years
State funding programs	BEG - Federal funding for efficient buildings (valid only for Germany)

ELECTRICAL ENGINEERING

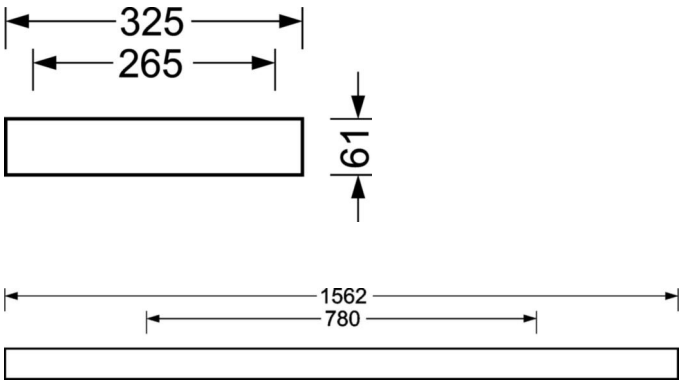
Controller	Electronic multi-lumen driver, 8-steps (1 pcs.)
System output	40W-26W
Mains voltage	230V/50Hz
Circuit breakers (inrush current)	17 pieces/B10, 27 pieces/B16, 28 pieces/C10, 45 pieces/C16

DEEP-LINK

<a href="https://www.regiolux.de/en/article/60898034150">https://www.regiolux.de/en/article/60898034150</a>
---

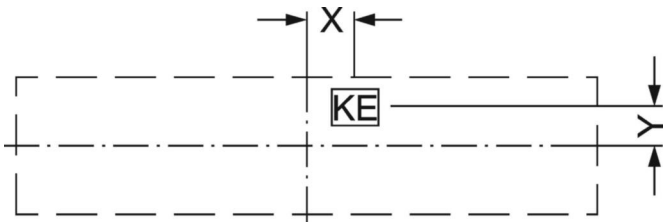


Reference	LED 5500lm/840/40W
ηLB	100 %
Φ ↓/↑	100 % / 0 %
UGR lat./long.	18.5 / 18.6
VDU	65° < 3000cd/m²



LIGHTING TECHNOLOGY

Placement	LED, Colour rendering/Light colour CRI ≥ 80 / 3000K+4000K
Colour tolerance (MacAdam)	3SDCM
Photobiological safety (Luminaire)	RG0
Nominal luminous flux/switching steps (rounded)	5500lm/840/40W, 5200lm/840/38W, 5000lm/840/36W, 4700lm/840/34W, 4500lm/840/32W, 4200lm/840/30W, 4000lm/840/28W, 3700lm/840/26W, 5100lm/830/39W, 4900lm/830/37W, 4600lm/830/36W, 4400lm/830/34W, 4200lm/830/32W, 3900lm/830/30W, 3700lm/830/28W, 3400lm/830/26W (Standard setting 5500lm)
LED service life	50000h L80/B10 (Tq 35°C)
Luminaire luminous efficiency	142lm/W-129lm/W
UGR lat./long.	18.5 / 18.6 (840LF/40W)



MECHANICS

Housing colour	traffic white RAL 9016
Dimensions (LxWxH)	1562mm x 325mm x 61mm
Weight (net)	5.2kg
Cable entry KE (X/Y)	0mm/100mm
Type of installation	Ceiling-mounted single installation

Dimensions

L	1562 mm	Length
B	325 mm	Width
H	61 mm	Height
A1	780 mm	Mounting distance single mounting
A3	265 mm	Mounting distance between luminaires in a light run arrangement
X	0 mm	Distance cable infeed to the center of the luminaire on the X-axis
Y	100 mm	Distance cable infeed to the center of the luminaire on the Y-axis

OPERATING DATA

LIGHT COLOUR 830

	switching step 1	switching step 2	switching step 3	switching step 4	switching step 5	switching step 6	switching step 7	switching step 8
Luminous flux (lm)	5093	4858	4622	4386	4150	3915	3679	3443
Output (W)	39.3	37.4	35.5	33.5	31.6	29.6	27.7	25.8
lm/W	130	130	130	131	131	132	133	133
UGR I/q	18,3/18,3	18,1/18,2	17,9/18	17,8/17,8	17,6/17,6	17,4/17,4	17,1/17,2	16,9/17
Light density (cd/m²)	2188	2087	1985	1884	1783	1682	1580	1479
Lifetime 1	50000h	50000h	50000h	50000h	50000h	50000h	50000h	50000h
	L80/B10 (Tq	L80/B10 (Tq	L80/B10 (Tq	L80/B10 (Tq	L80/B10 (Tq	L80/B10 (Tq	L80/B10 (Tq	L80/B10 (Tq
	35°C)	35°C)	35°C)	35°C)	35°C)	35°C)	35°C)	35°C)

LIGHT COLOUR 840

	switching step 1	switching step 2	switching step 3	switching step 4	switching step 5	switching step 6	switching step 7	switching step 8
Luminous flux (lm)	5500	5245	4989	4733	4478	4222	3966	3710
Output (W)	40	38	36.1	34.1	32.1	30.1	28.1	26.1
lm/W	138	138	138	139	140	140	141	142
UGR I/q	18,5/18,6	18,4/18,4	18,2/18,3	18/18,1	17,8/17,9	17,6/17,7	17,4/17,5	17,2/17,2
Light density (cd/m²)	2363	2253	2143	2033	1924	1814	1704	1594
Lifetime 1	50000h	50000h	50000h	50000h	50000h	50000h	50000h	50000h
	L80/B10 (Tq	L80/B10 (Tq	L80/B10 (Tq	L80/B10 (Tq	L80/B10 (Tq	L80/B10 (Tq	L80/B10 (Tq	L80/B10 (Tq
	35°C)	35°C)	35°C)	35°C)	35°C)	35°C)	35°C)	35°C)

The column highlighted in color indicates the factory default setting. Please refer to the warranty conditions in the characteristics listed above.